

**Septic Installers' Local Distributor for Monarch Products Co. Inc.
Precast Concrete Products**

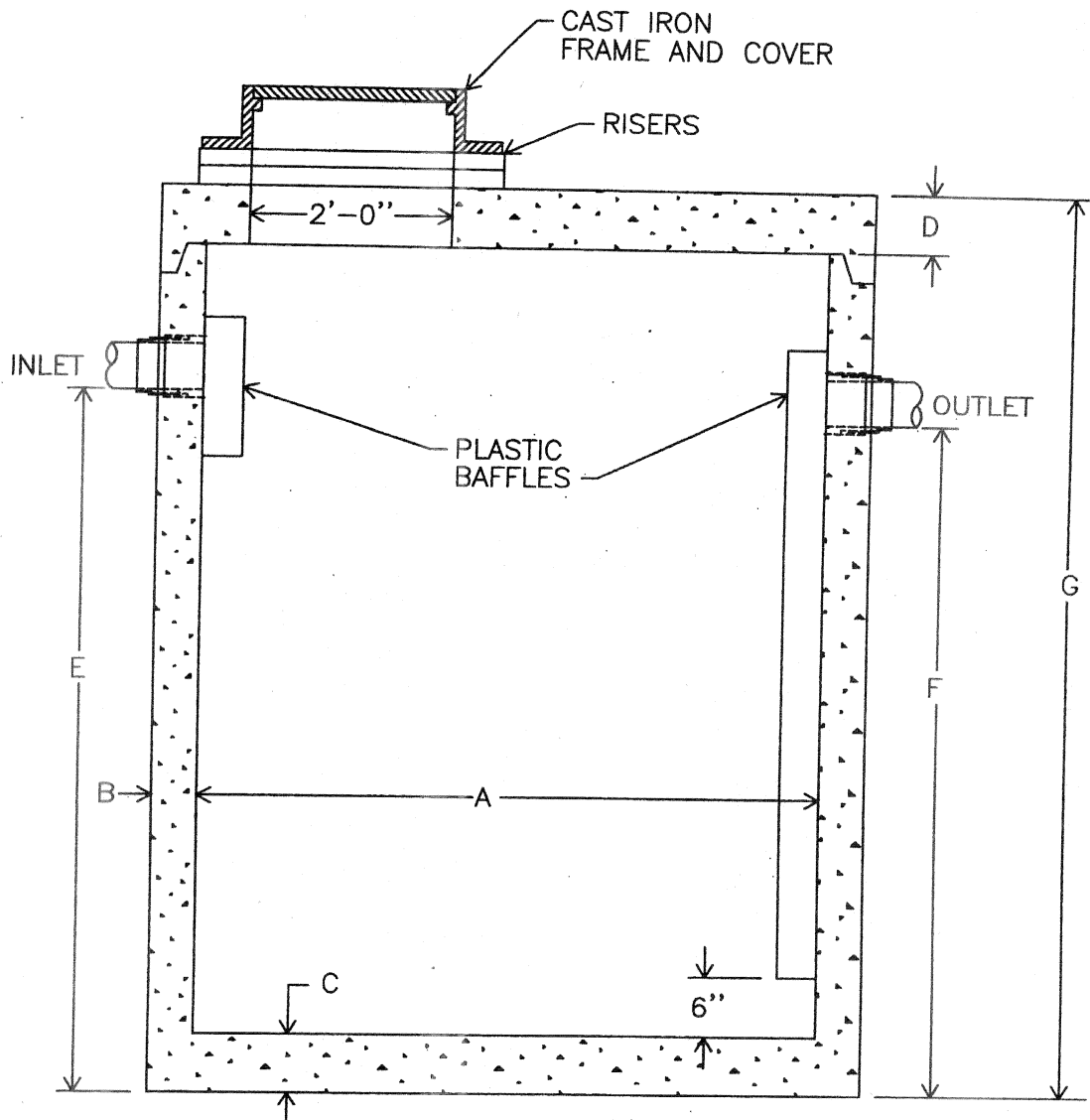
Grease Traps

G-1	Grease / Oil Interceptors - Traffic Rated
G-3	1,000 Gal. Commercial Grease Interceptor
GI-1000-2	2-Compartment 1,000 Gal. - Non Traffic
GT-152	2-Compartment 1,500 Gal. - Non Traffic



CHESAPEAKE BAY SEPTIC TANK, LLC

Septic Installers' Local Distributor for Monarch Products Co. Inc.
Precast Concrete Products



CAPACITY	A	B	C	D	E	F	G
230 GALLON	4'-0" DIA.	5"	6"	8"	3'-3"	3'-0"	5'-0"
300 GALLON	4'-0" DIA.	5"	6"	8"	4'-3"	4'-0"	6'-0"
500 GALLON	5'-0" DIA.	6"	8"	8"	4'-5"	4'-2"	6'-3"
1000 GALLON	6'-0" DIA.	7"	8"	8"	5'-6"	5'-3"	7'-6"

NOTE: OTHER CAPACITIES AVAILABLE

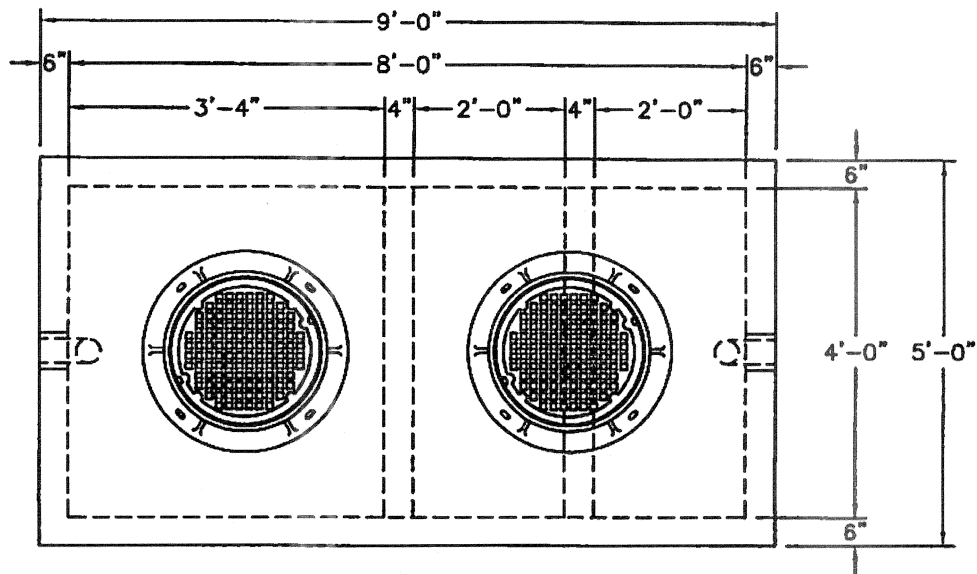
GREASE / OIL INTERCEPTORS
TRAFFIC RATED

DWG. G-1

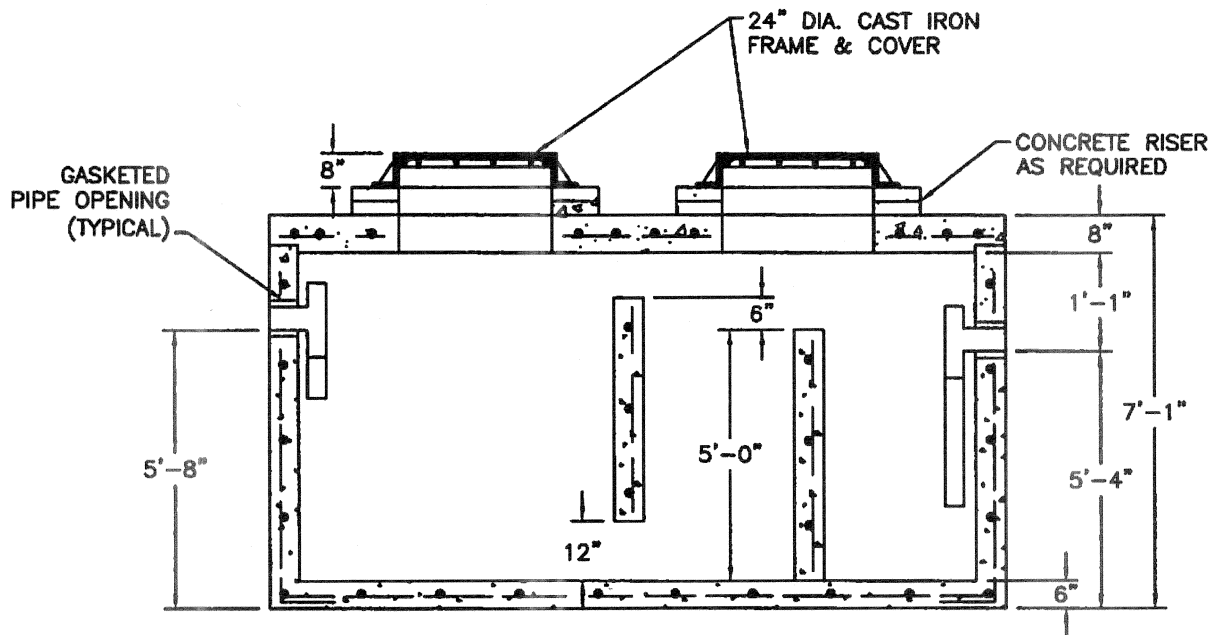


CHESAPEAKE BAY SEPTIC TANK, LLC

Septic Installers' Local Distributor for Monarch Products Co. Inc.
Precast Concrete Products



-PLAN-



-SECTION-

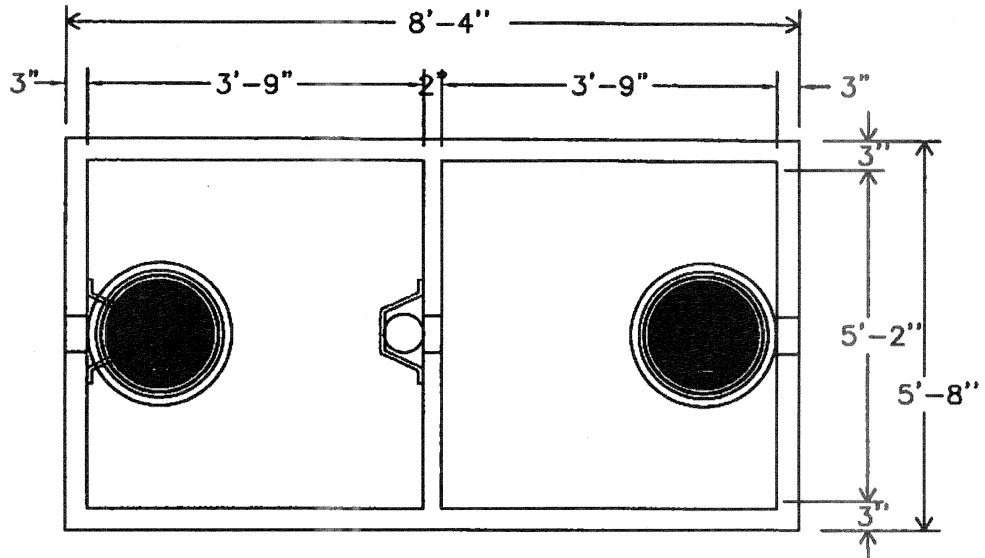
1000 GALLON COMMERCIAL
GREASE INTERCEPTOR

DWG. G-3

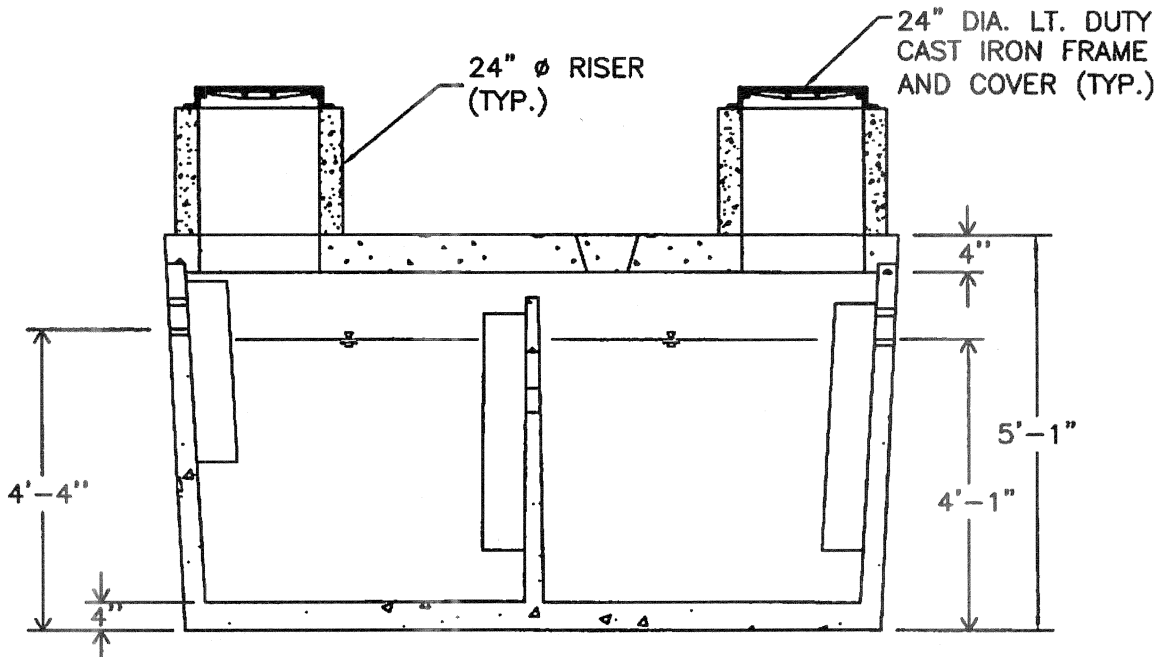


CHESAPEAKE BAY SEPTIC TANK, LLC

Septic Installers' Local Distributor for Monarch Products Co. Inc.
Precast Concrete Products



-PLAN-



-SECTION-

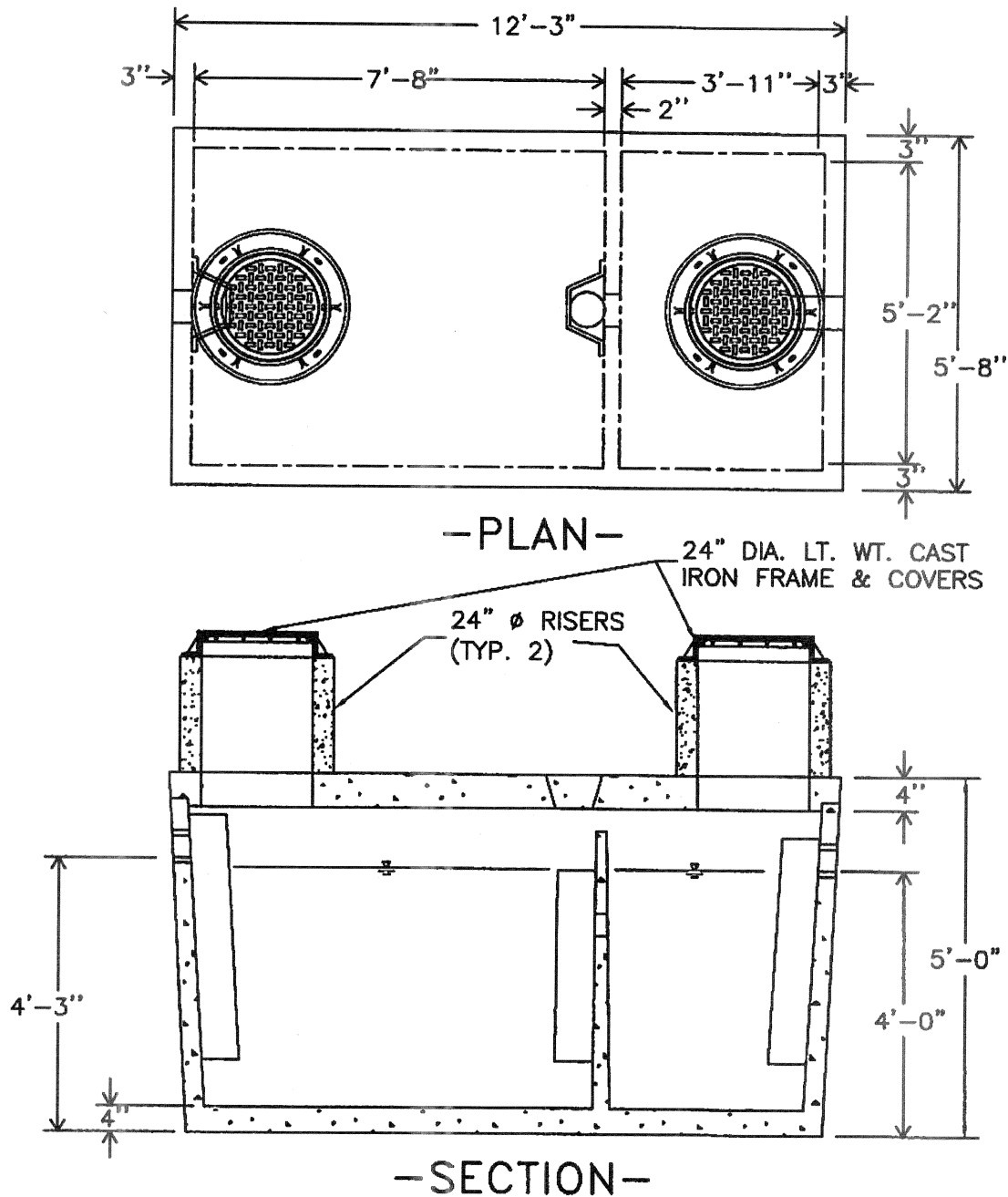
PRECAST 2 COMPARTMENT GREASE TRAP
1000 GALLON CAPACITY - NON TRAFFIC

GI-1000-2



CHESAPEAKE BAY SEPTIC TANK, LLC

Septic Installers' Local Distributor for Monarch Products Co. Inc.
Precast Concrete Products



PRECAST 2 COMPARTMENT GREASE TRAP
1500 GALLON CAPACITY - NON TRAFFIC

DWG. GT-152