

Manholes

MANHOLES:

MH-4A	4' Dia. Sanitary Use
MH-4B	Base - 4' Dia. w/ Flow Channels
MH-4C	4' Dia. w/ Flat Lid
MH-5A	5' Dia.
MH-5B	5' Dia. w/ Adaptor Slab
MH-6A	6' Dia.
MH-8A	8' Dia.

MHR-1 GRADE-ADJUSTING RINGS

MHR-2 RISER RINGS

MHR-3 CAST IRON & STEEL PRODUCTS

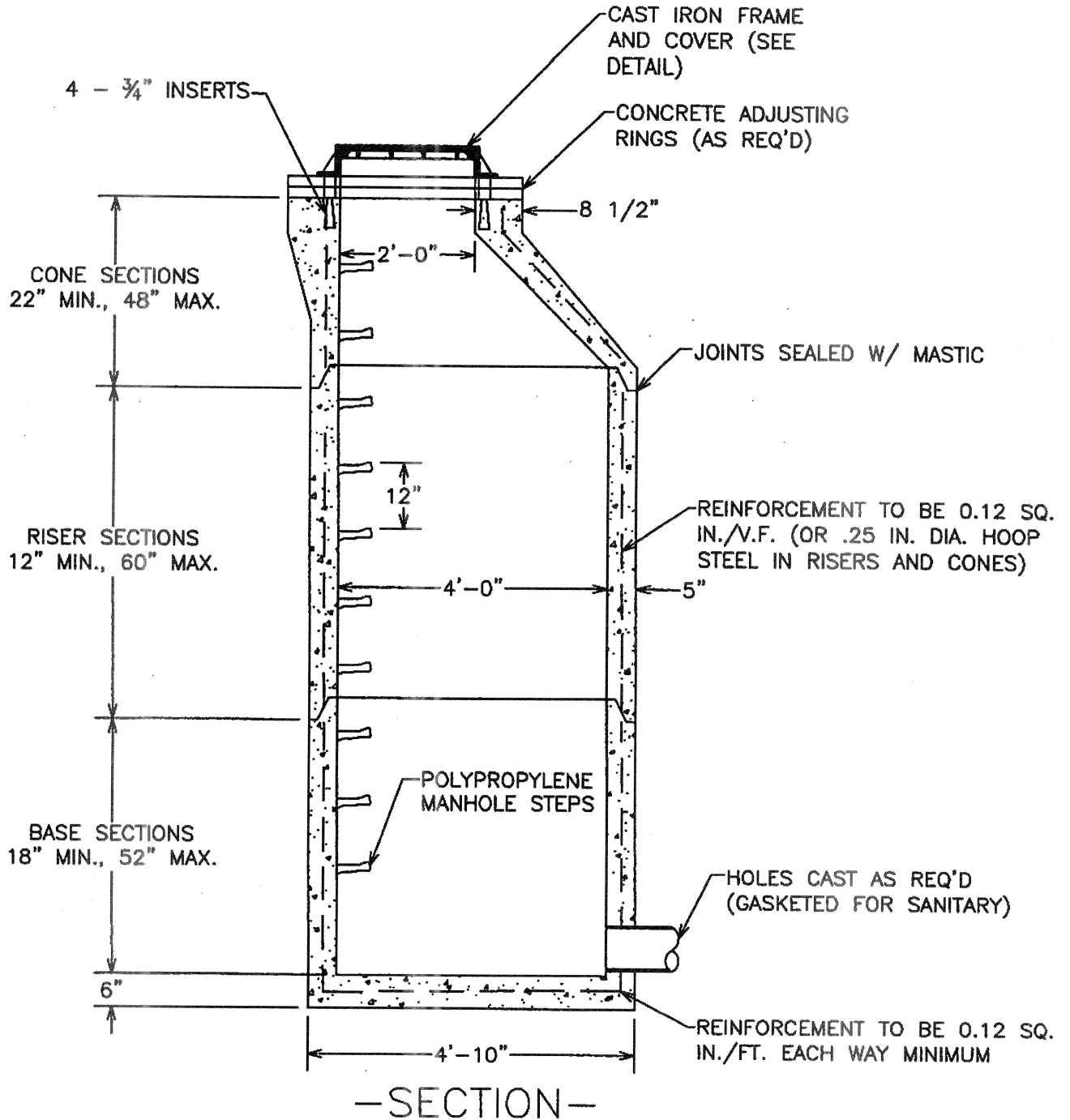
POSITIVE-SEAL GASKET SYSTEM w/ Power Sleeve Expansion



CHESAPEAKE BAY SEPTIC TANK, LLC

Septic Installers' Local Distributor for Monarch Products Co. Inc.
Precast Concrete Products

NOTE: MEETS ASTM C-478 SPECIFICATIONS



PRECAST CONCRETE MANHOLE
4 FT. DIAMETER — SANITARY USE

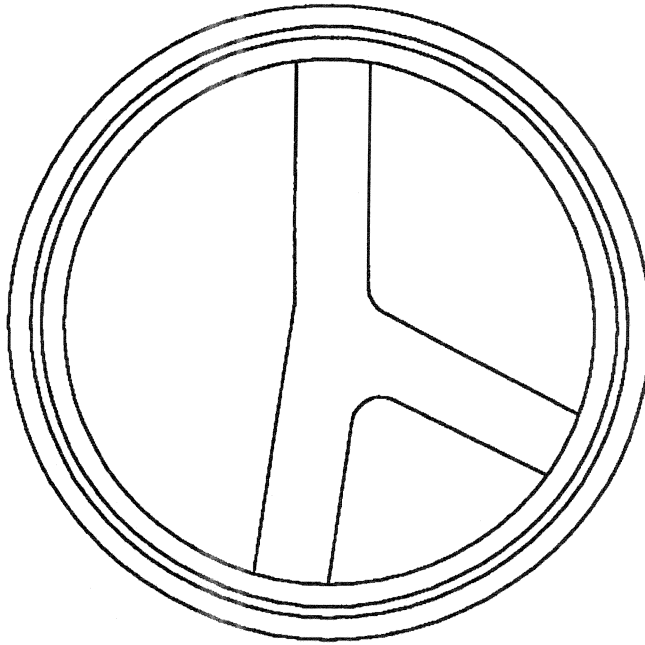
DWG. MH-4A



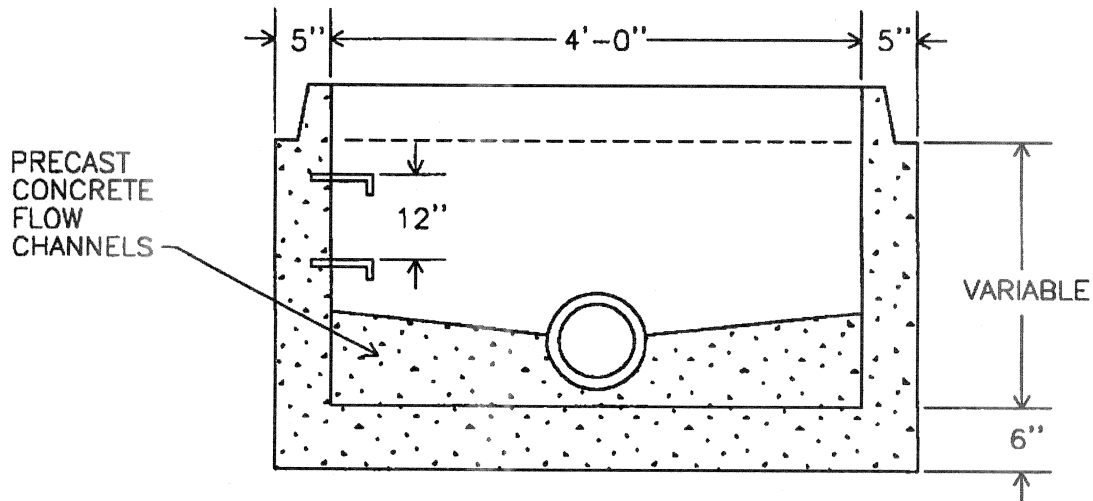
CHESAPEAKE BAY SEPTIC TANK, LLC

Septic Installers' Local Distributor for Monarch Products Co. Inc.
Precast Concrete Products

NOTE: MEETS ASTM C-478 SPECIFICATIONS



—PLAN—



—SECTION—

PRECAST CONCRETE MANHOLE BASE
4 FT. DIAMETER W/ FLOW CHANNELS

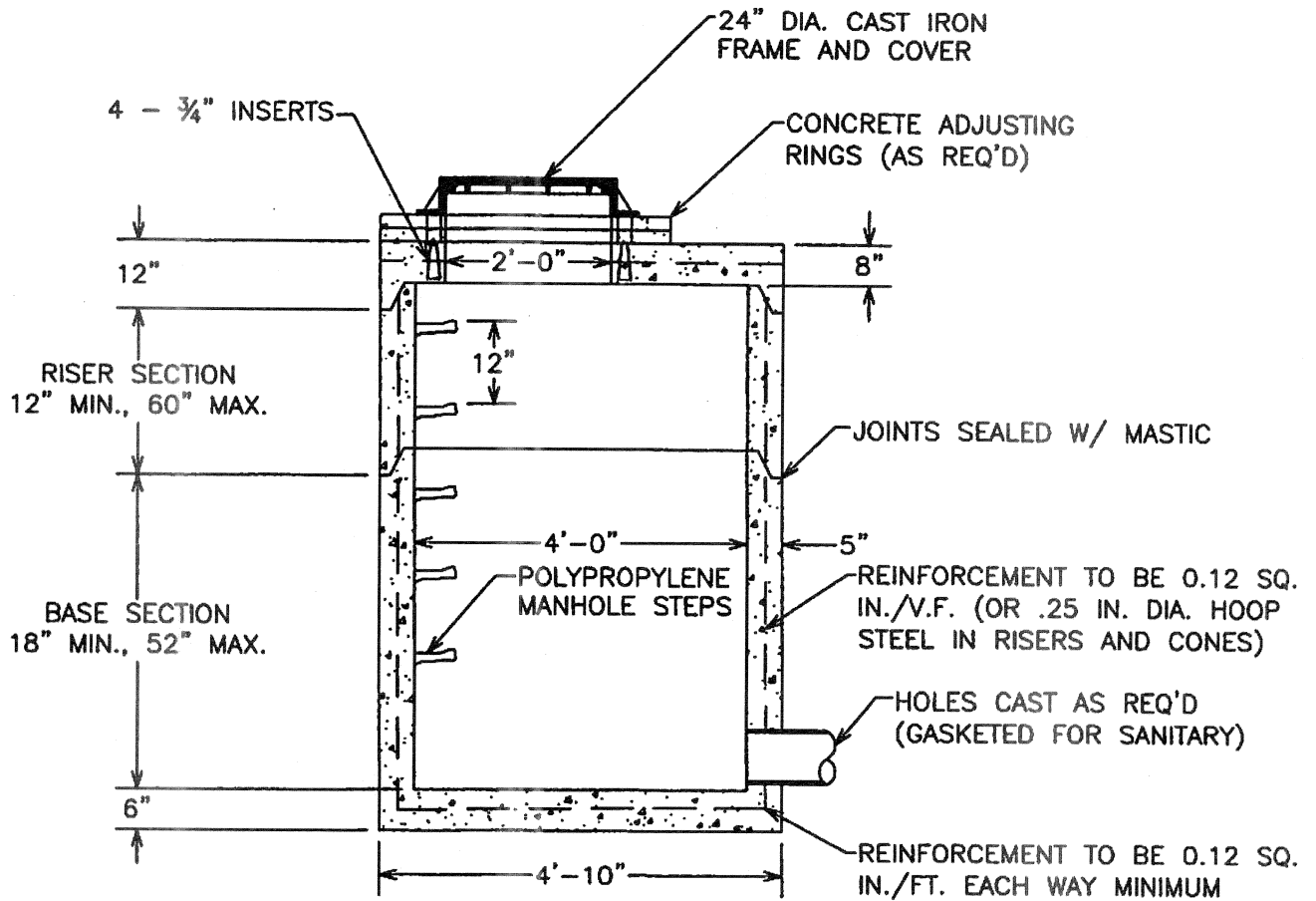
DWG. MH-4B



CHESAPEAKE BAY SEPTIC TANK, LLC

Septic Installers' Local Distributor for Monarch Products Co. Inc.
Precast Concrete Products

NOTE: MEETS ASTM C-478 SPECIFICATIONS



—SECTION—

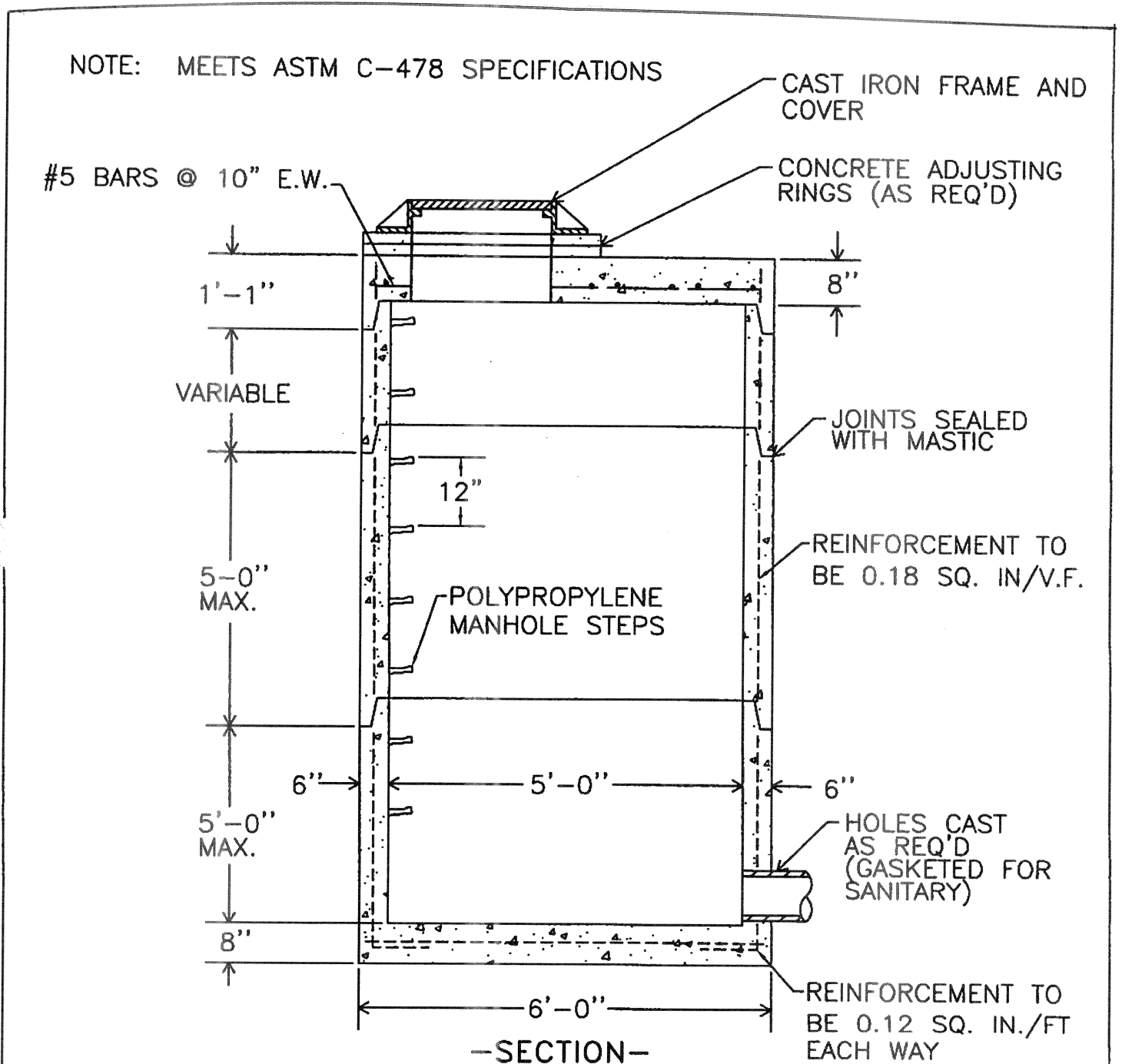
PRECAST CONCRETE MANHOLE
4 FT. DIAMETER W/ FLAT LID

DWG. MH-4C



CHESAPEAKE BAY SEPTIC TANK, LLC

Septic Installers' Local Distributor for Monarch Products Co. Inc.
Precast Concrete Products



*AVAILABLE WITH 6" WIDE FLANGED BASE

PRECAST CONCRETE MANHOLE
5 FT. DIAMETER

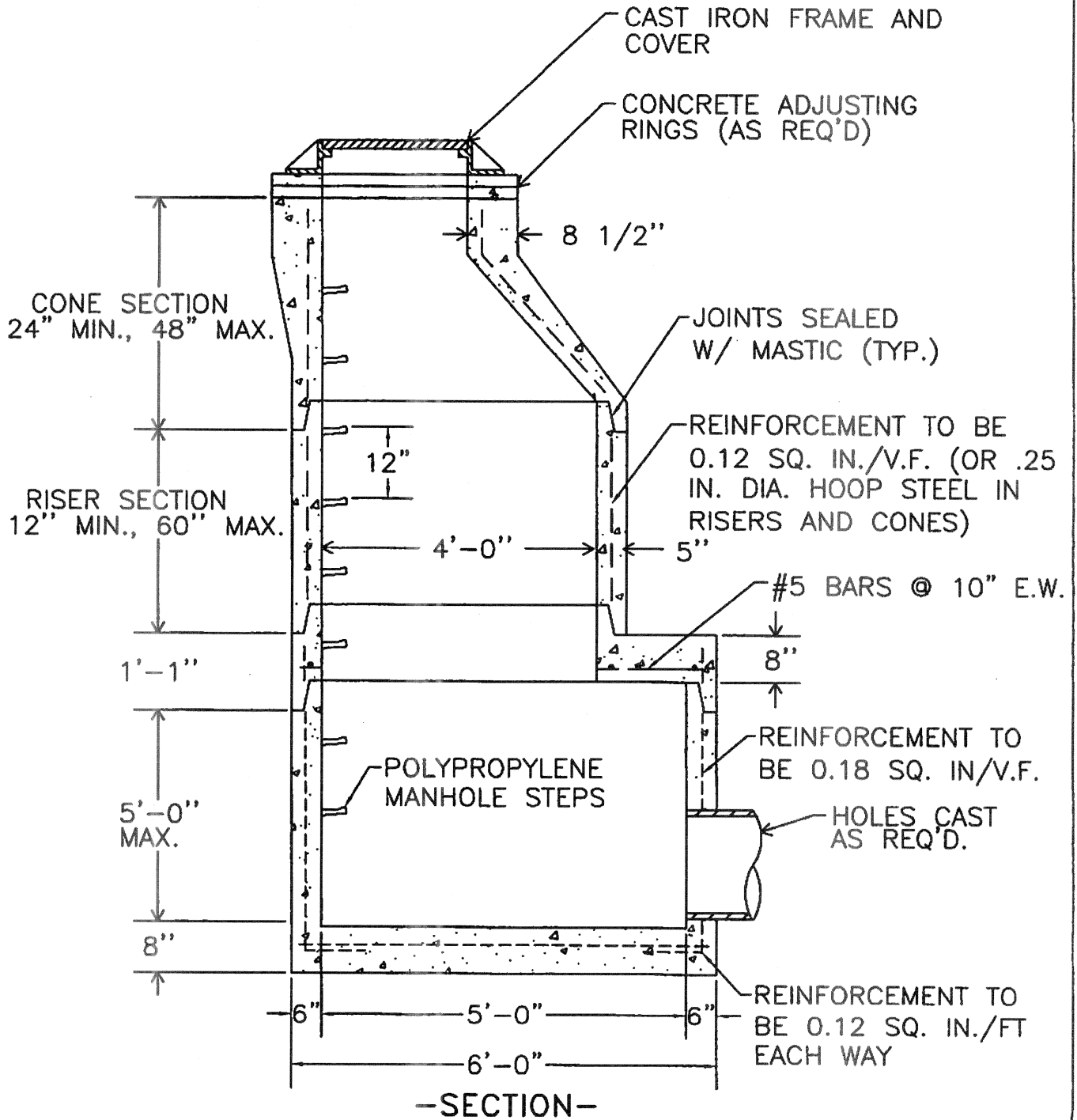
DWG. MH-5A



CHESAPEAKE BAY SEPTIC TANK, LLC

Septic Installers' Local Distributor for Monarch Products Co. Inc.
Precast Concrete Products

MEETS ASTM C-478 SPECIFICATIONS



PRECAST CONCRETE MANHOLE
5 FT. DIAMETER W/ ADAPTOR SLAB

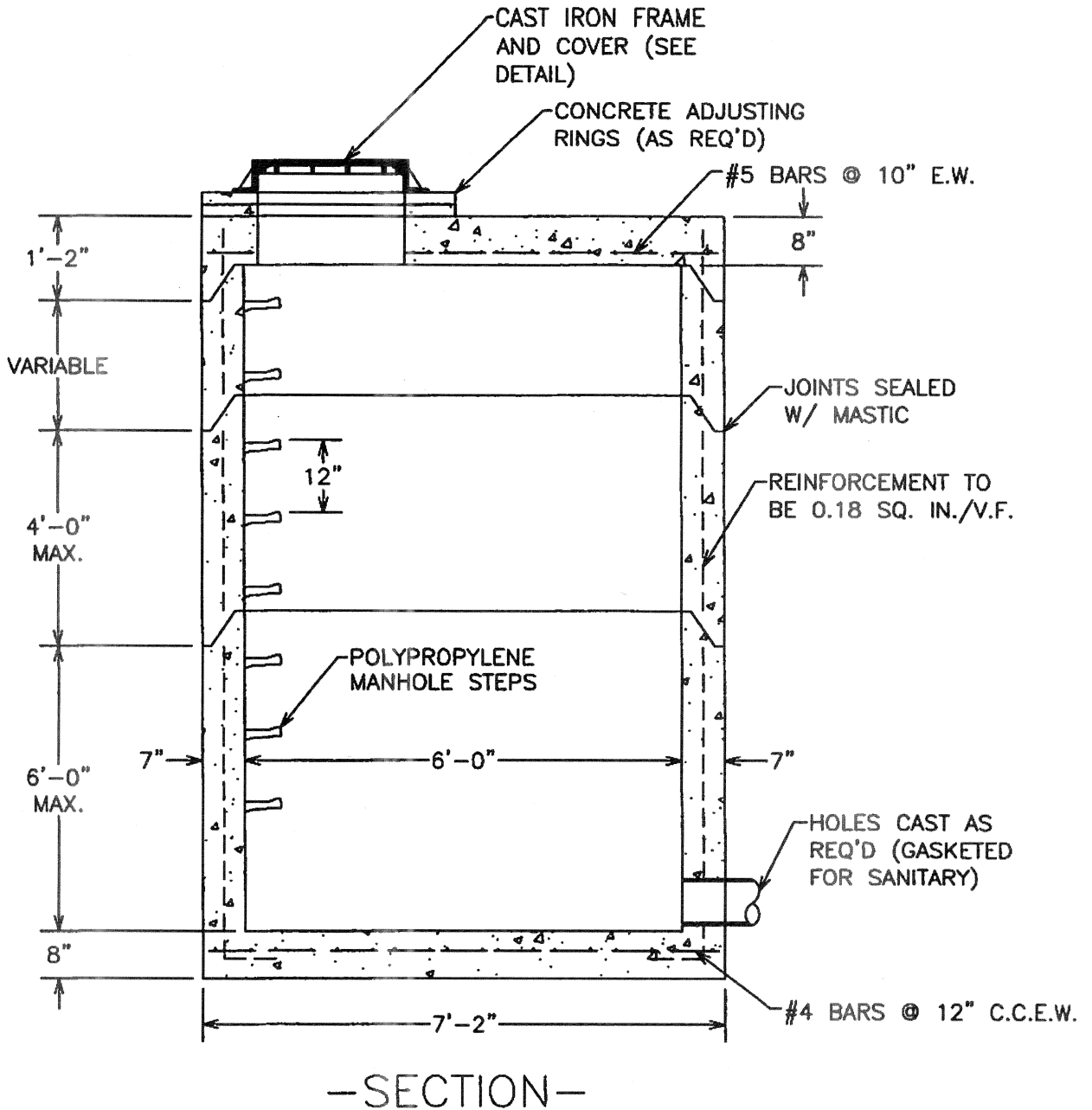
DWG. MH-5B



CHESAPEAKE BAY SEPTIC TANK, LLC

Septic Installers' Local Distributor for Monarch Products Co. Inc.
Precast Concrete Products

NOTE: MEETS ASTM C-478 SPECIFICATIONS



*AVAILABLE WITH 6" WIDE FLANGED BASE

PRECAST CONCRETE MANHOLE
6FT. DIAMETER

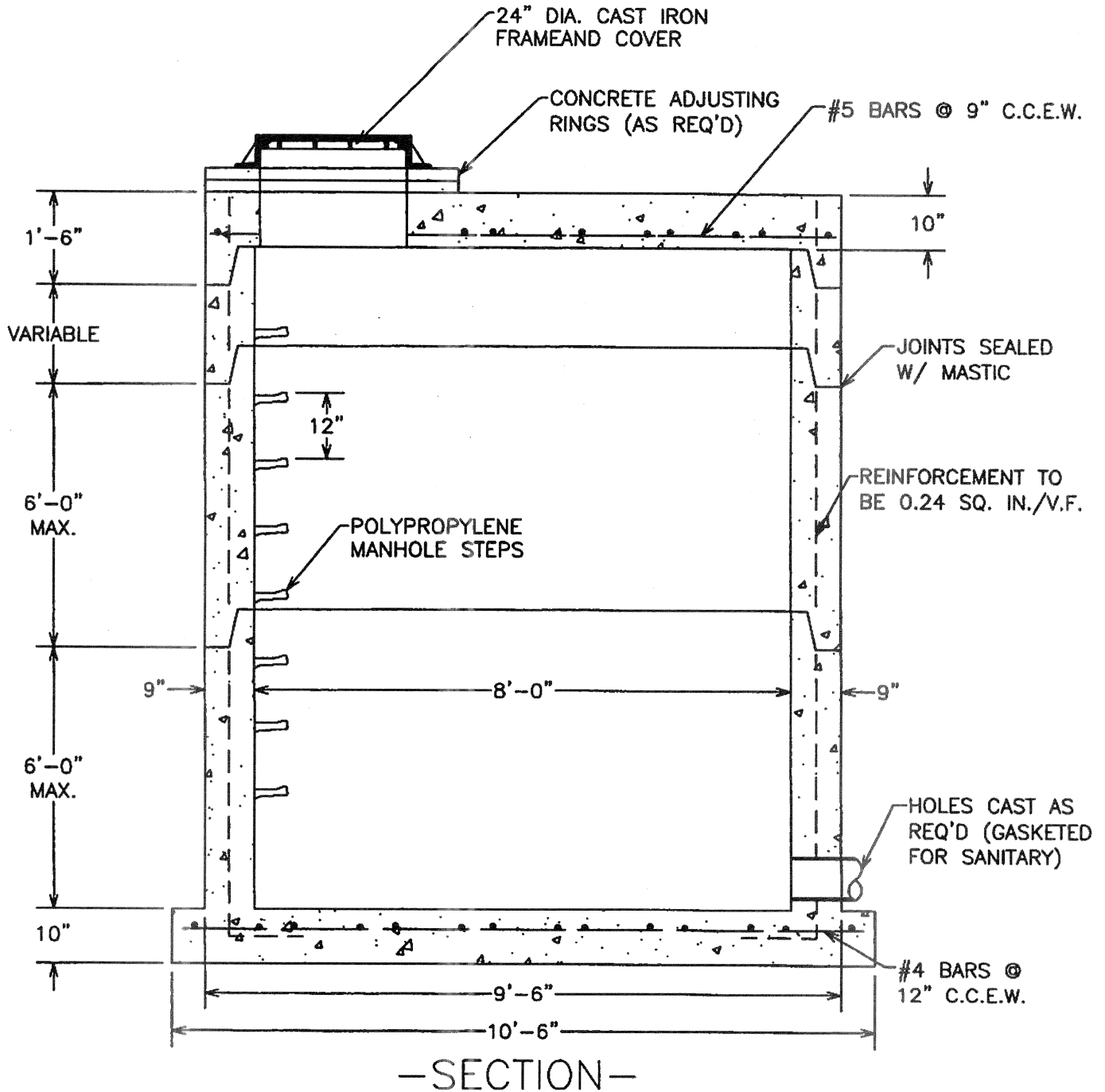
DWG. MH6A



CHESAPEAKE BAY SEPTIC TANK, LLC

Septic Installers' Local Distributor for Monarch Products Co. Inc.
Precast Concrete Products

NOTE: MEETS ASTM C-4/8 SPECIFICATIONS



*AVAILABLE WITH 6" WIDE FLANGED BASE

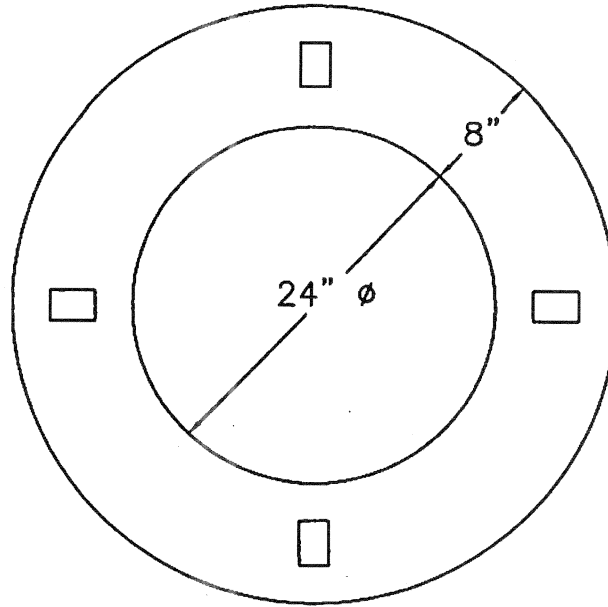
PRECAST CONCRETE MANHOLE
8FT. DIAMETER

DWG. MH8A

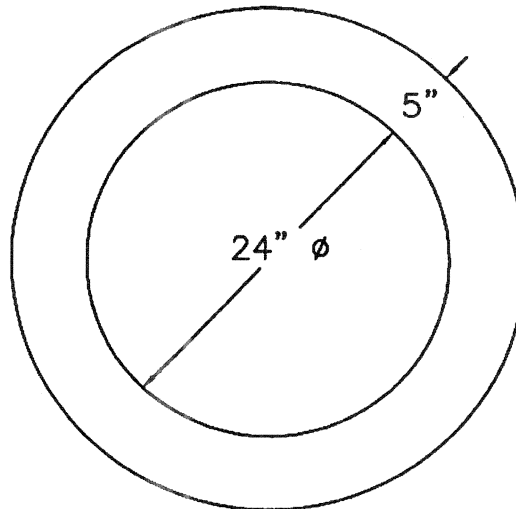


CHESAPEAKE BAY SEPTIC TANK, LLC

Septic Installers' Local Distributor for Monarch Products Co. Inc.
Precast Concrete Products



GRADE ADJUSTMENT RINGS
-WITH SLOTTED BOLT OPENINGS-
2", 3", & 4" HEIGHTS



GRADE ADJUSTMENT RINGS
-SOLID-
2", 3", 4", 5", 6", 12", 18", & 24" HEIGHTS

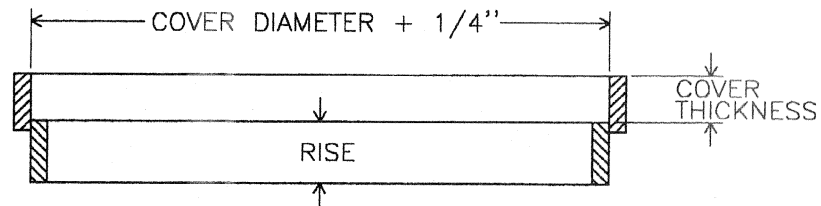
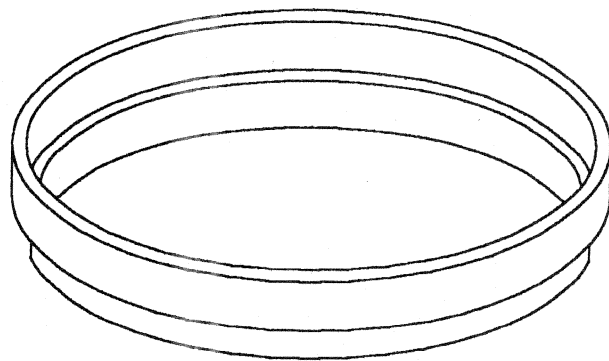
MANHOLE GRADE ADJUSTING RINGS

DWG. MHR-1



CHESAPEAKE BAY SEPTIC TANK, LLC

Septic Installers' Local Distributor for Monarch Products Co. Inc.
Precast Concrete Products



- * STEEL RISER RINGS RAISE MANHOLE COVERS WITHOUT DISTURBING THE FRAME
- * VARIOUS SIZES IN STOCK
- * CUSTOM SIZES AVAILABLE
- * CUSTOMER TO SPECIFY COVER DIAMETER, COVER THICKNESS AT THE SEAT, AND DESIRED RISE

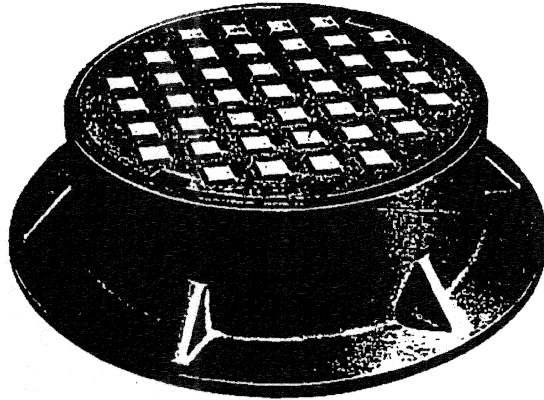
MANHOLE RISER RINGS

DWG. MHR-2

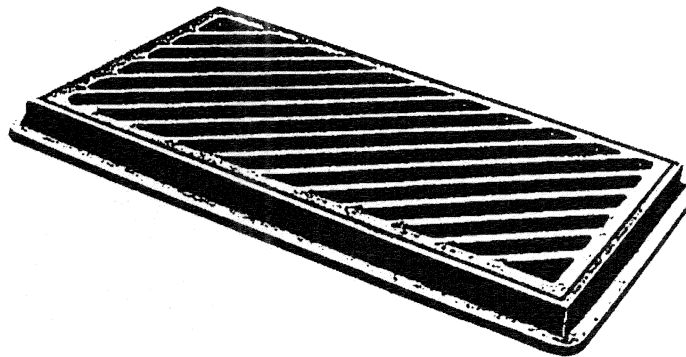


CHESAPEAKE BAY SEPTIC TANK, LLC

Septic Installers' Local Distributor for Monarch Products Co. Inc.
Precast Concrete Products



CAST IRON MANHOLE FRAMES AND COVERS
* VARIOUS TYPES AND SIZES IN STOCK



STRUCTURAL STEEL FRAMES AND GRATES
* STANDARD SIZES IN STOCK

CAST IRON AND STEEL PRODUCTS

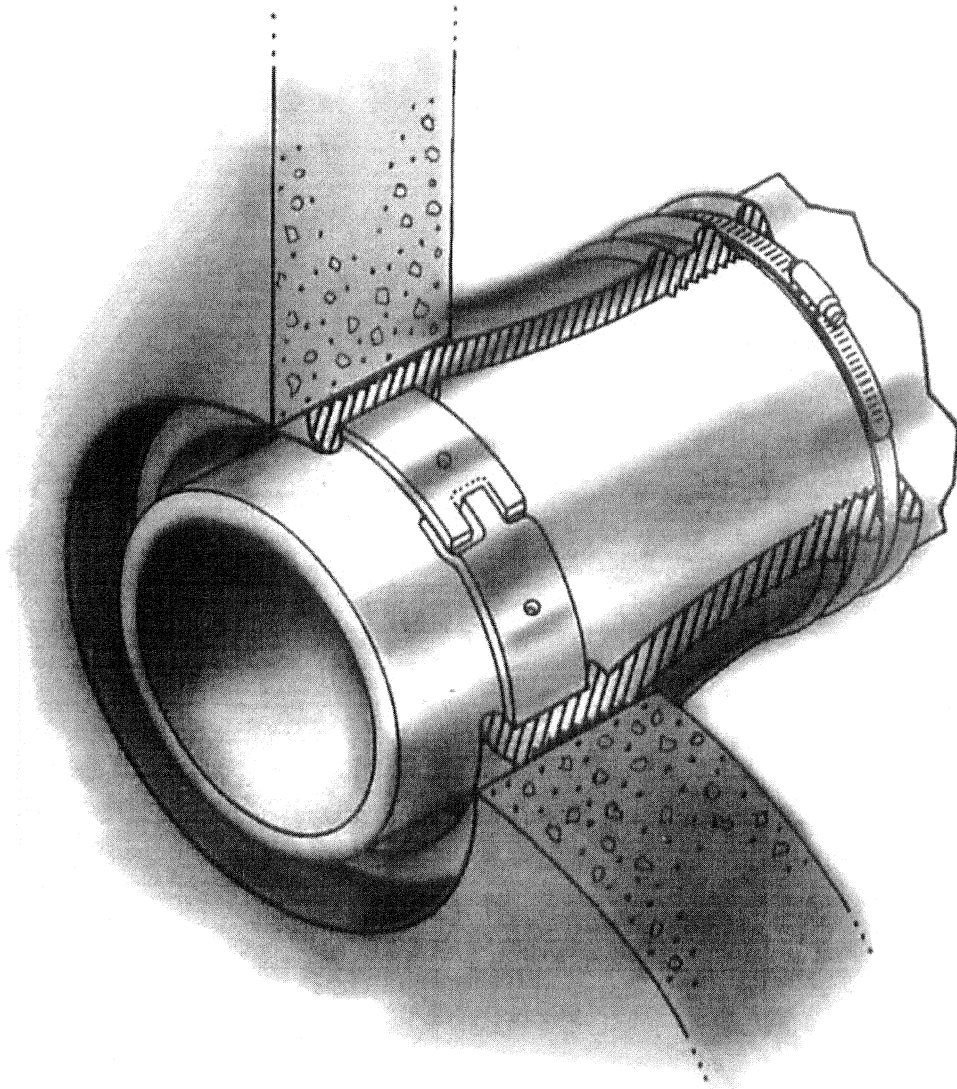
DWG. MHR-3



CHESAPEAKE BAY SEPTIC TANK, LLC

Septic Installers' Local Distributor for Monarch Products Co. Inc.
Precast Concrete Products

POSITIVE SEAL GASKET SYSTEM WITH POWER SLEEVE EXPANSION



PSX POSITIVE SEAL GASKET SYSTEM PSX POSITIVE SEAL GASKET SYSTEM PSX POSITIVE SEAL GASKET SYSTEM

Press-Seal Gasket Corporation

6932 Gettysburg Pike, Fort Wayne, Indiana 46804

Phone: (260)436-0521 (800)348-7325 Fax: (260)436-1908 E-mail: sales@press-seal.com Web: www.press-seal.com



CHESAPEAKE BAY SEPTIC TANK, LLC

Septic Installers' Local Distributor for Monarch Products Co. Inc. Precast Concrete Products

Our original PSX; POSITIVE SEAL pipe to manhole flexible connector system. PSX is available for 8" and larger holes to seal the most commonly used pipe types and sizes.

PSX Advantages

- Meets And Or Exceeds Material Specifications of ASTM C-923
- Type 304 Stainless Steel Compression Power Sleeve Is One Piece With No Welds. Made With 10 and 11 Gauge Steel.
- Highest Installation Pressures, 2500 to 6000 PSI. The More PSI Force, The Better The Initial And Long Term Seal.
- Gasket Is Made Of High Quality Polyisoprene Rubber. Provides Greater Deflection Capabilities and Greater Tear Resistance.
- Type 304 Stainless Steel Take-Up Clamps.
- For Use With Cored Holes, Or Our Fiberglass, or Pro-Former Hole Formers.

TEST	ASTM METHOD	TEST REQUIREMENTS	TEST RESULTS
CHEMICAL RESISTANCE; 1N SULFURIC ACID 1N HYDROCHLORIC ACID	D 534, AT 22°C FOR 48 HRS.	NO WEIGHT LOSS NO WEIGHT LOSS	NO WEIGHT LOSS NO WEIGHT LOSS
TENSILE STRENGTH	D 412	1200 PSI, MIN.	2600 PSI
ELONGATION AT BREAK	D 412	350%, MIN.	675%
HARDNESS	D 2240 (SHORE A DUROMETER)	±5 FROM THE MANUFACTURER'S SPECIFIED HARDNESS	45
ACCELERATED OVEN-AGING	D 573, 70± 1°C FOR 7 DAYS	DECREASE OF 15%, MAX, OF ORIGINAL TENSILE STRENGTH, DECREASE OF 20%, MAX, OF ELONGATION	-13% TENSILE CHANGE, -14% ELONGATION CHANGE
COMPRESSION TEST	D 395, METHOD B, AT 70°C FOR 22 HRS.	DECREASE OF 25%, MAX, OF ORIGINAL DEFLECTION	13.20%
WATER ABSORPTION	D 471 IMMERSE 0.75 BY 2-IN. SPECIMEN IN DISTILLED WATER AT 70°C FOR 48 HRS.	INCREASE OF 10%, MAX, OR ORIGINAL BY WEIGHT	3.50%
OZONE RESISTANCE	D 1171	RATING 0	PASS
LOW-TEMP, BRITTLE POINT	D 746	NO FRACTURE AT -40°C	PASS
TEAR RESISTANCE	D 624, METHOD B	200 LBF/IN. (MIN.)	318 LBF/IN.

PIPE INSTALLATION

1. Clean pipe and boot to ensure no dirt or foreign materials are present.
2. Clamping surface on pipe must be clean and smooth.
3. Center pipe in opening and insert until pipe breaks the inside plane of manhole.
4. Attach take-up clamp(s) and stagger screw(s) of clamp(s) around the groove of the gasket so that take-up pressure will be equalized. Make sure each clamp is completely in the correct groove.
5. Using a torque ratchet or torque wrench, gradually tighten all screw(s) of clamp(s) in an alternating pattern to 60lbs/in torque.
6. After reaching 60lbs/in torque on final screw, check all screws again to ensure equal compression of all clamps.
7. If system is to be tested, testing shall be completed prior to backfilling, following all recommendations and requirements of the test system manufacturer. Vacuum testing shall be conducted in accordance with ASTM C-1244.
8. Adjust pipe to line and grade. Use proper bedding, backfill materials and techniques so that pipe deflection and deformation is minimized.
9. **Any pipe stubs installed in the manhole must be positively restrained from movement. Press-Seal is not responsible for blow outs due to unrestrained pipe stub or future lateral connections.**
10. Vacuum testing after backfill voids warranty.

Copyright 1994 by Press-Seal Gasket Corp. (July 2002)

Before using the PSX-POSITIVE SEAL system for any custom applications, contact our Customer Service Department for more information.

Press-Seal Gasket Corporation

6932 Gettysburg Pike, Fort Wayne, Indiana 46804

Phone: (260)436-0521 (800)348-7325 Fax: (260)436-1908 E-mail: sales@press-seal.com Web: www.press-seal.com

PSX POSITIVE SEAL GASKET SYSTEM PSX POSITIVE SEAL GASKET SYSTEM PSX POSITIVE SEAL GASKET SYSTEM